



Noise Monitoring Result

Day Time (0700 - 1900hrs on normal weekdays)

Location: M1a - Footbridge at EX-Wanchai Harbour Road Sports Centre

Date	Time	Weather	Measurement Noise Level			Baseline Level	Construction Noise Level	Limit Level
			Leq	L10	L90	Leq	Leq	Leq
Unit: dB(A), (30-min)								
29/12/2017	13:50	Fine	77.6	70.7	72.3	72	76	75
2/1/2018	09:30	Fine	76.4	78.5	72.2	72	74	75
11/1/2018	13:40	Fine	76.1	78.7	72.3	72	74	75
16/1/2018	13:45	Fine	78.9	80.2	75.2	72	78	75
23/1/2018	13:15	Fine	88.3	93.7	73.9	72	88	75

Location: M2b - Noon-day gun area

Date	Time	Weather	Measurement Noise Level			Baseline Level	Construction Noise Level	Limit Level
			Leq	L10	L90	Leq	Leq	Leq
Unit: dB(A), (30-min)								
27/12/2017	15:15	Fine	69.0	71.6	66.2	68	63	75
2/1/2018	10:15	Fine	69.0	70.7	66.1	68	63	75
11/1/2018	14:35	Fine	68.2	69.5	64.9	68	59	75
16/1/2018	15:00	Fine	72.9	77.3	65.5	68	71	75
23/1/2018	11:05	Fine	68.3	70.8	64.9	68	60	75

Location: M3a - Tung Lo Wan Fire Station

Date	Time	Weather	Measurement Noise Level			Baseline Level	Construction Noise Level	Limit Level
			Leq	L10	L90	Leq	Leq	Leq
Unit: dB(A), (30-min)								
27/12/2017	15:55	Fine	64.3	66.2	62.2	69	64	75
2/1/2018	11:00	Fine	66.2	67.8	64.3	69	66	75
11/1/2018	08:35	Fine	67.1	68.6	65.3	69	67	75
16/1/2018	09:05	Fine	64.1	65.8	61.8	69	64	75
23/1/2018	14:30	Fine	64.4	65.9	62.3	69	64	75

Location: M4b - Victoria Centre

Date	Time	Weather	Measurement Noise Level			Baseline Noise Level	Construction Noise Level	Limit Level
			Leq	L10	L90	Leq	Leq	Leq
Unit: dB(A), (30min)								
27/12/2017	09:35	Fine	66.1	67.6	63.2	67	66	75
5/1/2018	09:00	Fine	64.9	66.7	62.2	67	65	75
11/1/2018	09:15	Fine	69.6	70.5	62.4	67	66	75
16/1/2018	09:45	Fine	71.5	73.8	64.4	67	69	75
25/1/2018	08:02	Fine	64.5	66.2	62.0	67	65	75

Location: M5b - City Garden

Date	Time	Weather	Measurement Noise Level			Baseline Level	Construction Noise Level	Limit Level
			Leq	L10	L90	Leq	Leq	Leq
Unit: dB(A), (30min)								
27/12/2017	10:10	Fine	70.7	72.6	68.3	68	67	75
5/1/2018	09:45	Fine	68.7	70.2	66.4	68	60	75
11/1/2018	10:00	Fine	71.9	72.9	67.8	68	70	75
16/1/2018	10:30	Fine	69.0	70.6	66.7	68	62	75
25/1/2018	09:55	Fine	68.7	69.8	66.3	68	60	75

Location: M6 - HK Baptist Church Henrietta Secondary School

Date	Time	Weather	Measurement Noise Level			Baseline Level	Construction Noise Level	Limit Level
			Leq	L10	L90	Leq	Leq	Leq
Unit: dB(A), (30-min)								
27/12/2017	10:45	Fine	68.5	69.9	66.8	71	69	70
5/1/2018	10:25	Fine	67.2	68.5	65.7	71	67	70
11/1/2018	10:40	Fine	67.7	69.0	66.0	71	68	70
16/1/2018	11:10	Fine	67.7	68.8	66.3	71	68	70
25/1/2018	10:35	Fine	70.9	72.2	68.8	71	57	65



Noise Monitoring Result

Day Time (0700 - 1900hrs on normal weekdays)

Location: M7e - International Finance Centre (Eastern End of Podium) (Reference Station)

Date	Time	Weather	Measurement Noise Level			Baseline Level	Construction Noise Level	Limit Level
			Leq	L10	L90	Leq	Leq	Leq
Unit: dB(A), (30-min)								
27/12/2017	13:45	Fine	69.6	72.6	64.3	67	66	N/A
2/1/2018	14:10	Fine	67.9	69.9	64.7	67	61	N/A
10/1/2018	14:50	Fine	68.0	70.4	64.3	67	62	N/A
15/1/2018	14:30	Fine	69.3	72.9	63.5	67	66	N/A
22/1/2018	14:45	Fine	66.7	69.0	62.6	67	67	N/A

Location: M7w - International Finance Centre (Western End of Podium)

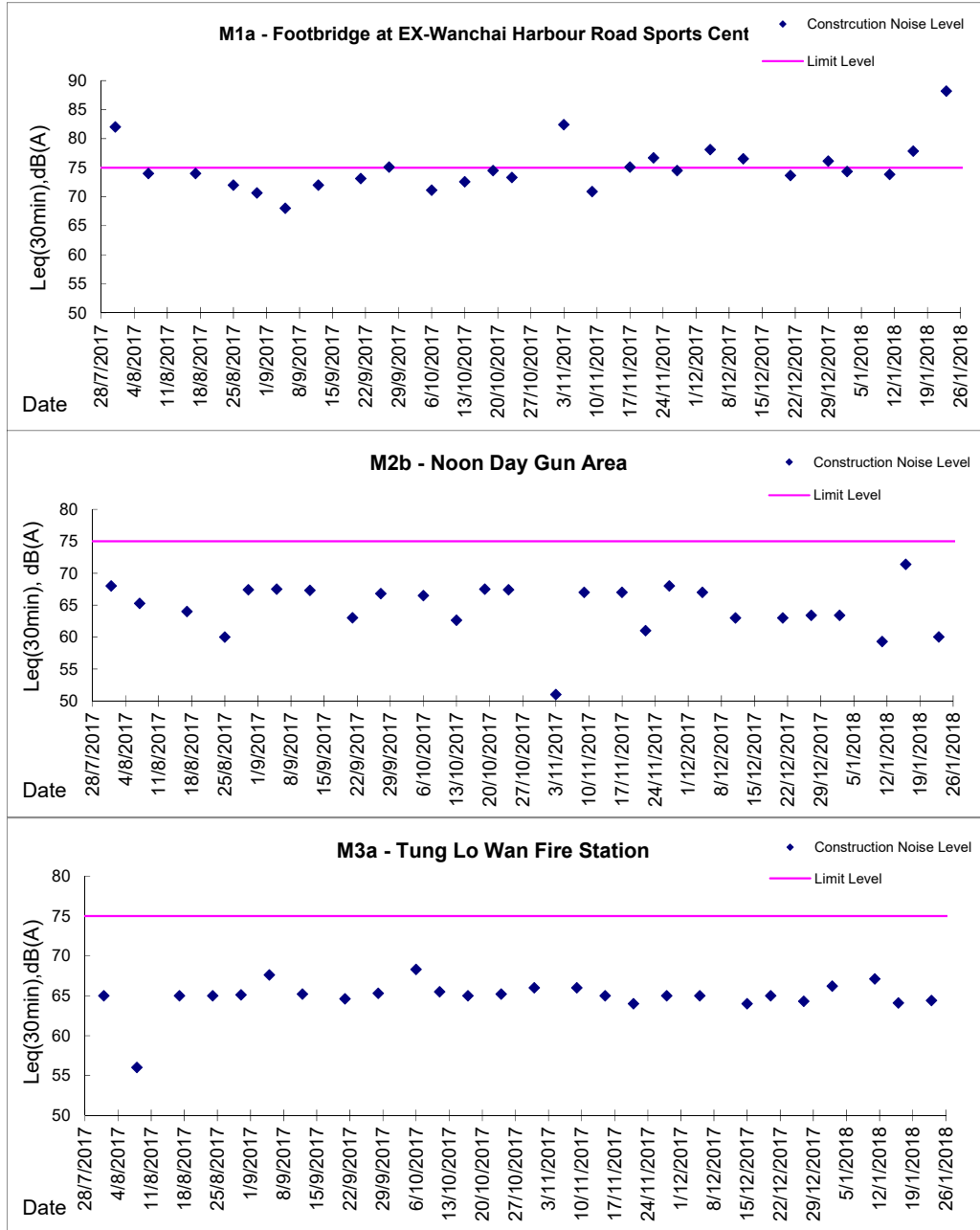
Date	Time	Weather	Measurement Noise Level			Baseline Level	Construction Noise Level	Limit Level
			Leq	L10	L90	Leq	Leq	Leq
Unit: dB(A), (30-min)								
27/12/2017	14:20	Fine	66.4	68.4	63.4	69	66	75
2/1/2018	14:50	Fine	66.5	69.3	62.3	69	67	75
10/1/2018	15:25	Fine	65.2	67.1	62.4	69	65	75
15/1/2018	13:50	Fine	66.3	68.2	62.9	69	66	75
22/1/2018	15:20	Fine	64.1	65.7	61.7	69	64	75

Location: M8 - City Hall

Date	Time	Weather	Measurement Noise Level			Baseline Level	Construction Noise Level	Limit Level
			Leq	L10	L90	Leq	Leq	Leq
Unit: dB(A), (30-min)								
27/12/2017	13:00	Fine	62.2	65.0	58.5	64	62	70
2/1/2018	13:25	Fine	63.7	65.5	61.1	64	64	70
10/1/2018	14:05	Fine	62.3	63.6	61.0	64	62	70
15/1/2018	15:30	Fine	60.5	62.5	57.1	64	61	70
22/1/2018	13:50	Fine	59.3	61.3	56.2	64	59	70

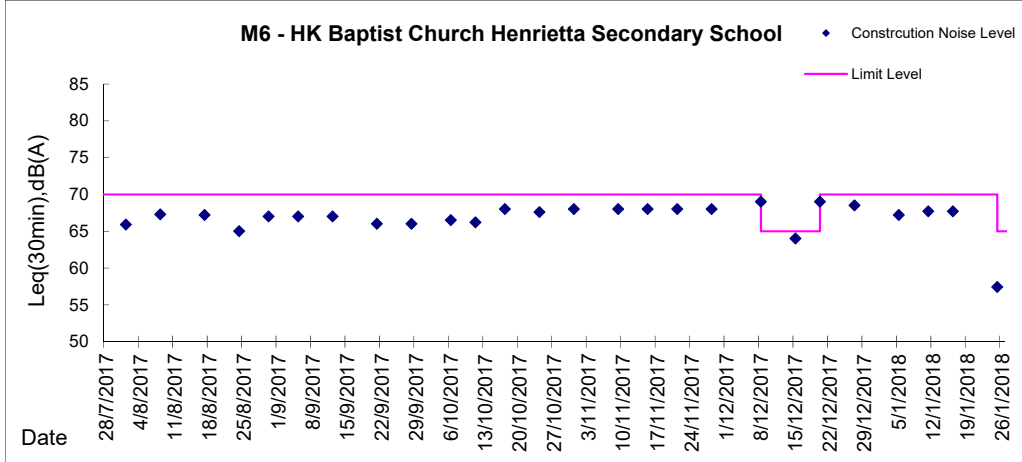
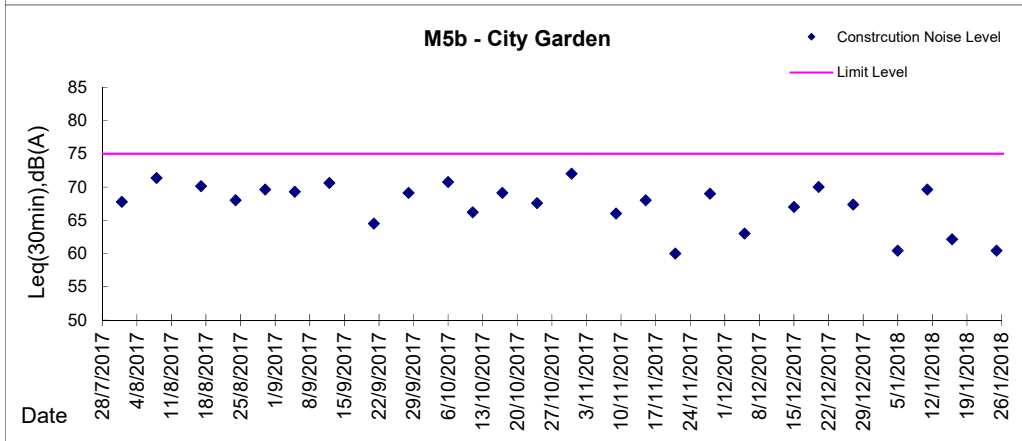
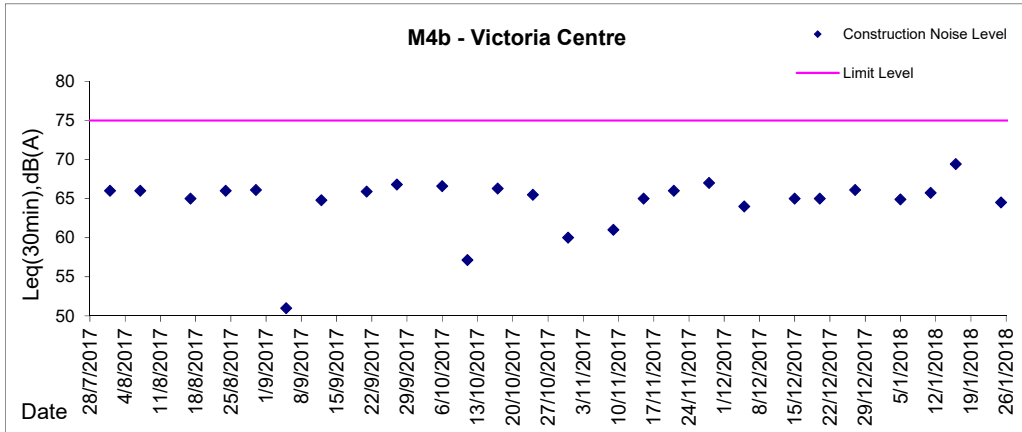


Graphic Presentation of Noise Monitoring Result
Day Time (0700 - 1900hrs on normal weekdays)





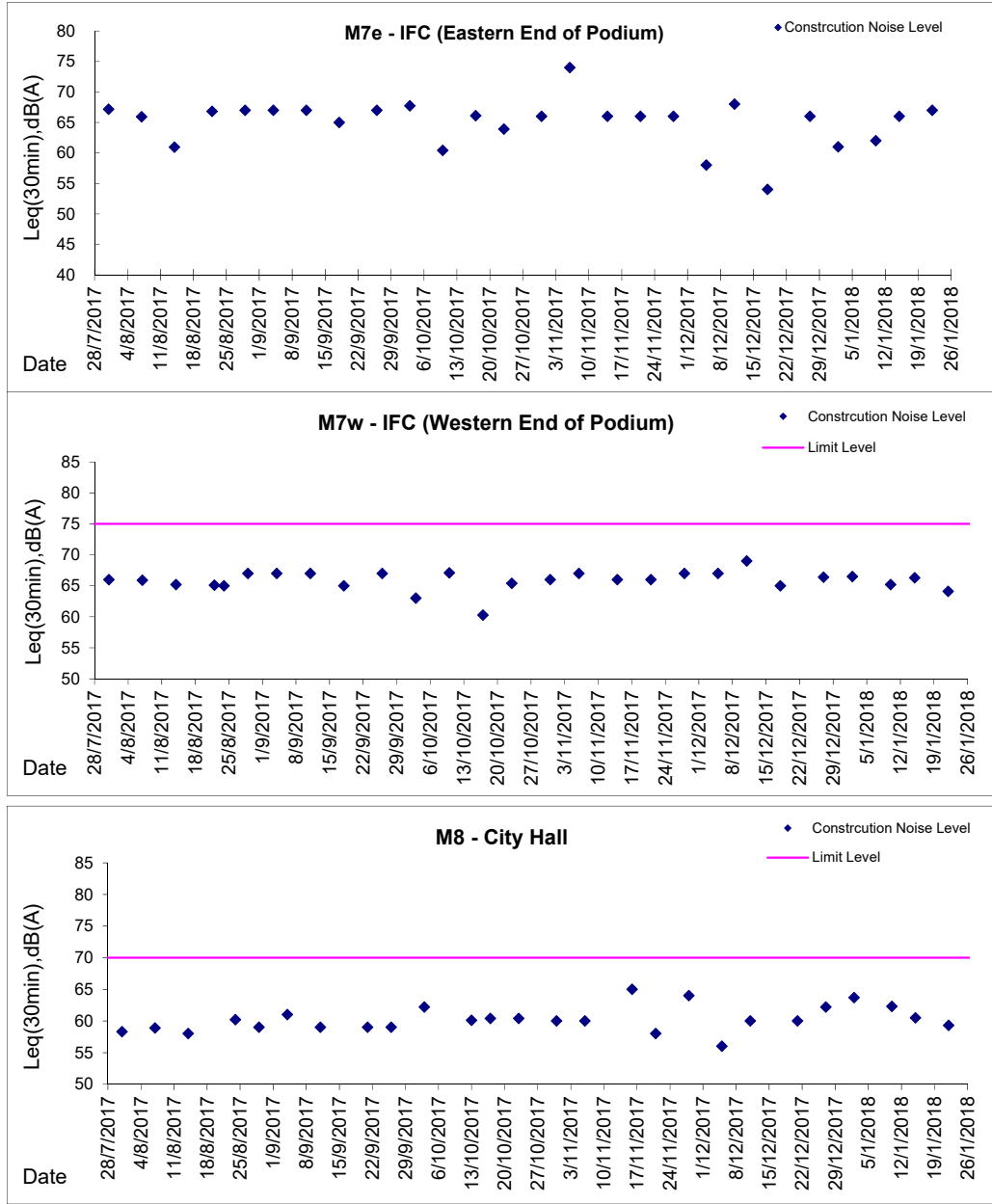
Graphic Presentation of Noise Monitoring Result
Day Time (0700 - 1900hrs on normal weekdays)





Graphic Presentation of Noise Monitoring Result

Day Time (0700 - 1900hrs on normal weekdays)



* Remark: M7e - IFC (Eastern End of Podium) is a reference monitoring station